

SAFETY AMBASSADOR PRESENTATION

James Profitt
Ohio Buckeye Chapter
Safety Ambassador



Solid Waste Accidents

Solid waste vehicles are involved in accidents with EVERYTHING:



Fires Continue to be a Problem





SWANA®

SOLID WASTE ASSOCIATION
of North America

Renewed Focused on Safety

Why does SWANA care about safety?

Waste/recycling collection workers have **5th highest fatality rate in U.S.**



- 33 collection employee deaths in 2015 (38.8 per 100,000 FTE)
- Likely undercounts (temps, public sector)
- Rate has increased since 2009 after 10 year decline
- SWANA has recorded at least 45 solid waste worker deaths in 2016
- Disproportionate number of worker fatalities occur at small employers in the private sector (i.e., small haulers)

Focused on Safety

Lots of Third-Party Fatalities

- **There were at least 64 fatal solid-waste related accidents in which a member of the public was killed in 2016**
- **This includes the single deadliest incident of 2016 which took place in Ohio**



SWANA® Ohio Fatalities 2016 - 2017

SOLID WASTE ASSOCIATION
of North America

- **2/20/2016 - Fairlawn man crushed to death by compactor truck**
- **5/17/2016 - Man killed at Miami Twp. Landfill – Construction accident**
- **5/18/2016 - Car fails to yield in path of garbage truck, 4 occupants ruled deceased at the scene in Vinton County**
- **9/20/16 - Collection worker struck by semi-truck in Ellsworth**



SWANA® Ohio Fatalities 2016 - 2017

SOLID WASTE ASSOCIATION
of North America

- **11/10/2016 – A man was struck and killed by heavy equipment at landfill**
- **12/15/16 – A man was struck and killed by a garbage truck while he was on the side of the road**
- **2/22/17 – Employee at recycling facility died after becoming trapped in a baler**
- **4/14/17 – Collection driver failed to yield at a stop sign and was ejected from truck and killed in subsequent crash.**

Injuries & Illnesses

- **Injury/illness rate for private sector**
 - In 2015, the U.S. reported injury/illness rates:
 - Solid waste collection - 6.6 (6.6 workers per 100 employees)
 - Landfill - 3.5 (3.5 workers per 100 employees)
 - MRF - 5.1 (5.1 workers per 100 employees)
- **NIOSH has found reported injury rates and days away from work are much higher for public sector workers than in private sector**
 - Older workers/light duty/better reporting?



SWANA®

SOLID WASTE ASSOCIATION
of North America

Too Many Injuries and Accidents

- **10,000 reported injuries and 1,800 tow away accidents/year**

Bottom line: Each week, there are 2-3 fatal accidents involving a solid waste employee or vehicle, hundreds of injuries, and dozens of accidents.

Common Safety Issues

- **Ohio waste/recycling employers face common safety issues:**
 - Challenging work environment
 - Weather/weight/traffic/sharps/slips/trips
 - Lack of supervision on the route/disposal site
 - Lack of compliance with safety/facility rules
 - Some argue there is inadequate training/maintenance
 - We need to work together to address these issues!

Improving Worker Safety

1. Engage Your Drivers and Other Front Line Workers

- Majority of accidents/injuries are caused by unsafe behavior.
- Make safety personal for your workers.
 - Figure out how to motivate workers to change their unsafe behaviors – Safety needs to be part of their DNA.
- Get visual – use photos and video to reach employees.
 - Most front-line workers will respond better to visual than written safety communication.

Improving Worker Safety

2. Review Your Safety Data

Not all Ohio employers have the same data:

- What are your most common injuries/accidents?
- What are your most costly injuries/accidents?
- Do you have more accidents on certain days/times?
- Figure out common causes—address them.
- Each municipality/company has different fleets, routes, safety leadership, budget constraints, etc.
- Only 1 Ohio participant in SWANA's first municipal accident and injury survey this spring.

Improving Worker Safety

3. Route Observation

Solid waste employers need to observe drivers and helpers on the route to make sure they are complying with applicable laws and working safety. Employers that do route observation on a regular basis see a substantial reduction in unsafe behaviors and accidents.

- **PPE**
- **Speed**
- **Seat Belts**
- **Turn Signals**
- **Backing (ANSI)**
- **Cellphone/Texting**
- **Riding Steps (ANSI)**
- **LOTO**

Improving Worker Safety

4. Use *Safety Monday, Safety Matters* and Other Visual Communication Tools

- Communicate importance of safety frequently and consistently
- Weekly/monthly safety meetings
- Get creative with signs, videos and posters



Improving Worker Safety

5. Safety Belts

- **CDL drivers are required to wear a safety belt on the route.**
- **Helpers should also use safety belt when in the cab**
 - Especially to and from the route and when on the way to disposal site
- **If truck overturns, it can save your driver's/helper's life!**



New York City - August 2011

Improving Worker Safety

6. Distracted Driving Policy—Enforce it!

- Cell phone
- Texting
- Food and beverages
- Have a written policy!
- Are you enforcing it?
- **Texting in Ohio is against the law, no cell phone use at all for novice drivers!!**



The National Safety Council (U.S.) recently reported 27% of all crashes involve cell phone use or texting.

Improving Worker Safety

7. Focus on Backing/Rear End Collisions

- These are the two most common accidents for solid waste vehicles.
- Rushing is often a contributing factor. Why are we rushing?
- Is driver using helper/mirror/camera while backing?
- Defensive routing, eliminate backing and unprotected left turns.



Improving Worker Safety

8. Focus on Lifting and Slips/Trips/Falls

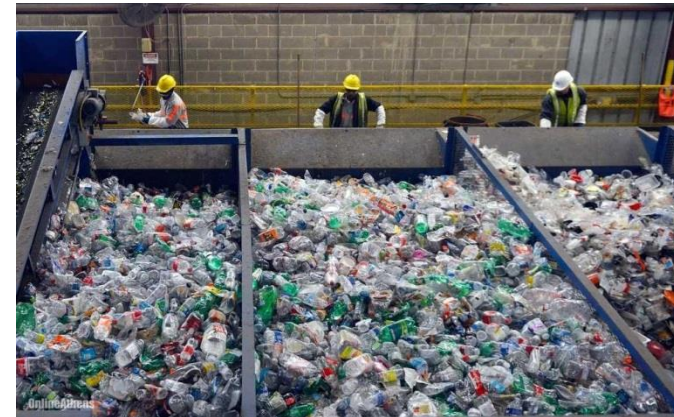
- These are the two most common injuries for solid waste workers.
- Lifting training - new hire and refresher
 - Workers are getting older and may be more prone to injury
- Consider limits on bag/container weights
- Why are your workers falling?
 - Correct footwear
 - Adjusting for inclement weather
 - Rushing

Safety at Disposal Facilities

9. Don't Forget About Disposal

Landfills, transfer stations and MRFs are challenging work environments:

- Pre-trip on heavy equipment
- Traffic rules – enforce them
- Tipping floor policy
- High visibility for everyone
- Lighting
- Don't walk under open tailgate
- Slips/trips/falls
- Frozen loads and swinging doors



Improving Worker Safety

10. PPE – Last Line of Defense

Personal Protective Equipment (PPE) is often an employee's last line of defense to avoiding an injury. Because of the wide variety of hazards solid waste workers face on a daily basis, PPE is essential to preventing injuries.

- **Make sure workers are wearing high viz**
 - Too many solid waste employees wearing dark shirts on routes!
- **Shoes, gloves, hard hats, glasses**
 - Use observations on route or at facility to enforce PPE rules.





SWANA's Safety Program

SWANA's expanded Safety Program includes webinars, weekly and monthly safety information, and frequent updates to chapters about accidents in their states. The 2017 Safety Summit included 4 sessions and a meeting of the Safety Ambassadors.

- **Safety Monday**

- Slow Down to Get Around stickers
- **Safety Ambassadors in chapters**
- Fatality info to chapters
- New classroom safety/compliance training
- **2017 Safety Awards @WASTECON!**
- **#SWANAsafety**





SWANA®

SOLID WASTE ASSOCIATION
of North America

Safety Matters Website

BECAUSE SAFETY MATTERS.
www.swana.org/safety

Five to Stay Alive
Safety Tips for Waste Collection Employees

Solid waste collection is the 5th most dangerous job in the United States.

1. Always wear PPE, especially high visibility vests and/or outerwear
2. Never use your cell phone or text while driving

BECAUSE SAFETY MATTERS.
www.swana.org/safety

Five to Stay Alive
Safety Tips for Landfill Employees

Landfills can be a dangerous place for both workers and customers.

1. **Proper PPE is a MUST!**
Do not begin a task without the proper Personal Protective Equipment (PPE), training, and knowledge. If you're unsure, ask your supervisor.
2. **Are you the right person for the task?**
Do not perform tasks, operate tools, or use equipment for which you have not been trained. If you're unsure, ask your supervisor.
3. **Maintain situational awareness**
Be vigilant of changing conditions. Keep your distance from hazards, take weather/soil conditions into account, and remember to "stop, look, and listen" before moving into a new area.
4. **Heavy equipment has the right of way**
Make yourself visible and stay clear of equipment on the move. Follow all signage. If driving, use flashers and keep your lights on.
5. **No Scavenging**
Landfill workers and customers should never scavenge material from the landfill.

SWANA wants you to go home to your family every day, safely. So, of course, never use a cell phone or text while working at the landfill.

Following these rules will help keep you safe!

For more #SWANAsafety info and resources: SWANA.org/safety

NGV AMERICA
Natural Gas Vehicles for America

SWANA

Natural Gas »»
A Clean, Safe and Smart Choice
for the Waste and Recycling Industry

BECAUSE SAFETY MATTERS.
www.swana.org/safety

**BACKING BEST
MANAGEMENT PRACTICES**

According to industry and OSHA data, backing represents approximately 25% of all injuries and accidents in the solid waste collection industry. Use these tips to stay safe on the job.

Safety Matters

SWANA.org/safety

- 5 to Stay Alive
- Backing Best Management
- NGV White Paper
- Safety Monday Archive
- Safety Quick Links & Resources
- Slow Down to Get Around Decals
- Upcoming Events
- And More!



SWANA®

SOLID WASTE ASSOCIATION
of North America

Ohio Initiatives

- **Collaboration Between nearby Safety Ambassadors (PA., Kentucky, Ind., Mi.)**
- **Implement a Statewide Safety Steering Committee**
 - Designed to promote SWANA statewide thru Safety
- **Slow Down To Get Around Campaign**
 - Work to pass SDTGA into law in Ohio, passed in 12 states
- **Small Hauler Outreach**
 - How do we reach out to small haulers, persuade them to join SWANA and provide ongoing assistance with their Safety Programs?

Conclusions

- **Solid waste employees in the United States have high fatality and injury rates. Our vehicles are involved in too many fatal accidents.**
- **Successful employers are engaging employees and getting them to change their unsafe behaviors.**
- **SWANA is enhancing and expanding the safety resources it provides to the entire industry -- to help get the industry off the “top 10” list and improve your safety performance.**



Questions?

Thank you!

James Profitt
937-781-3070
profittj@mcoho.org